

Sleeve cuff, cut 4



Pocket,

1 Center Front Piece, c



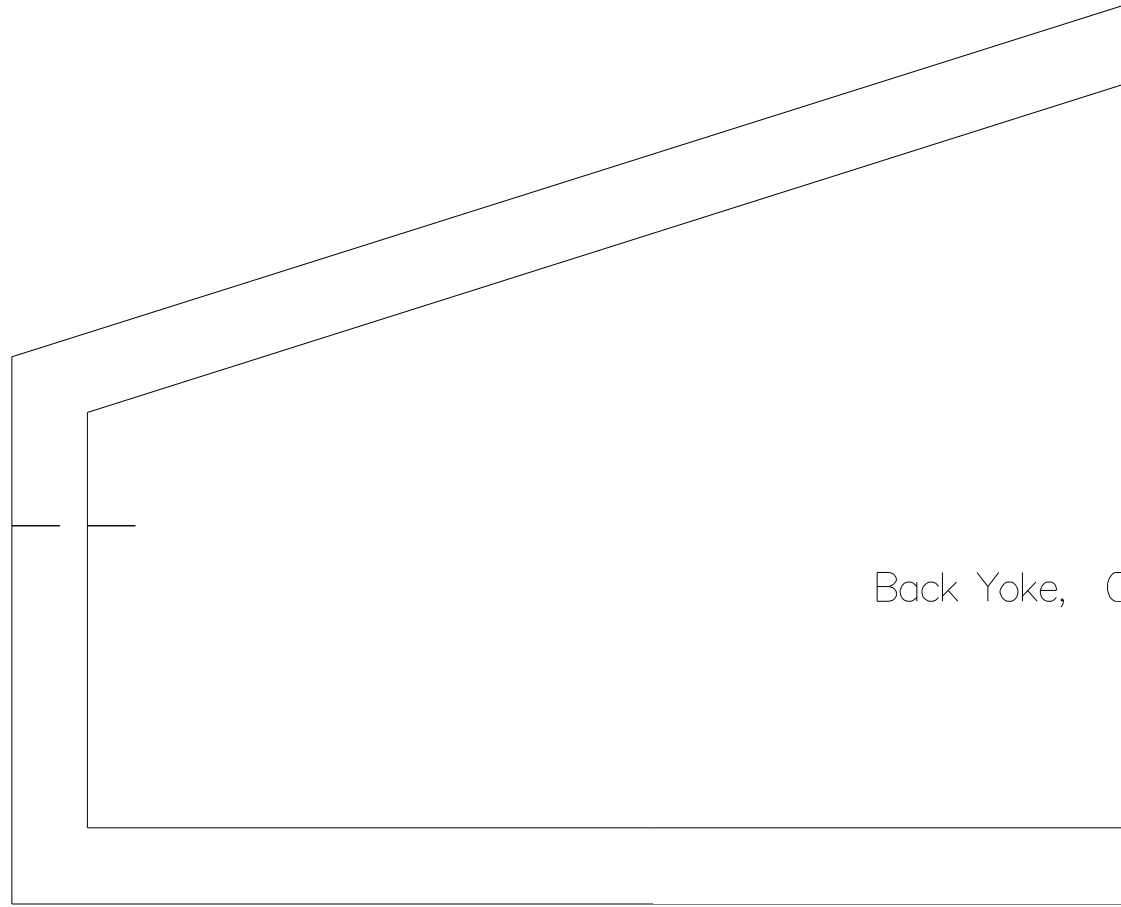
Button extension CF, c

Button extension Foldline

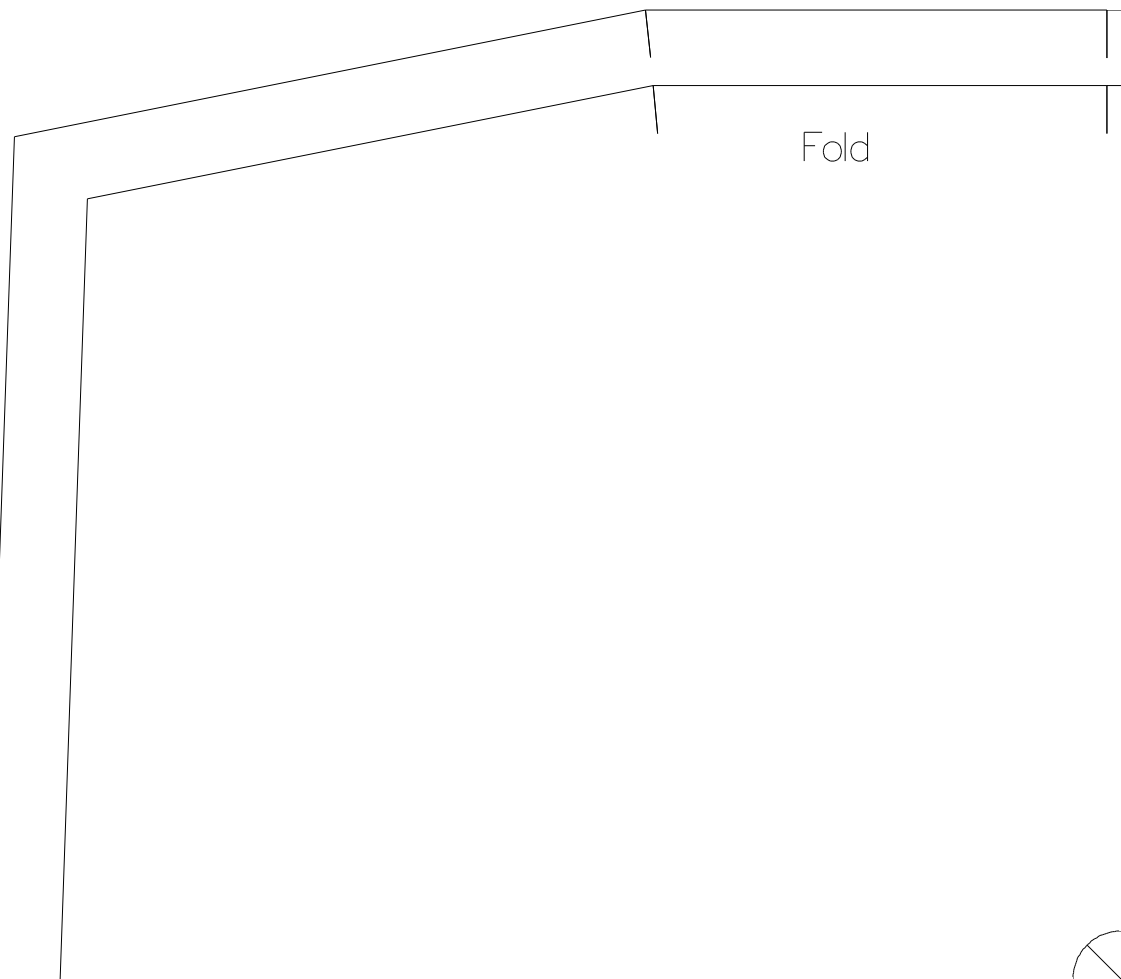


cut 2

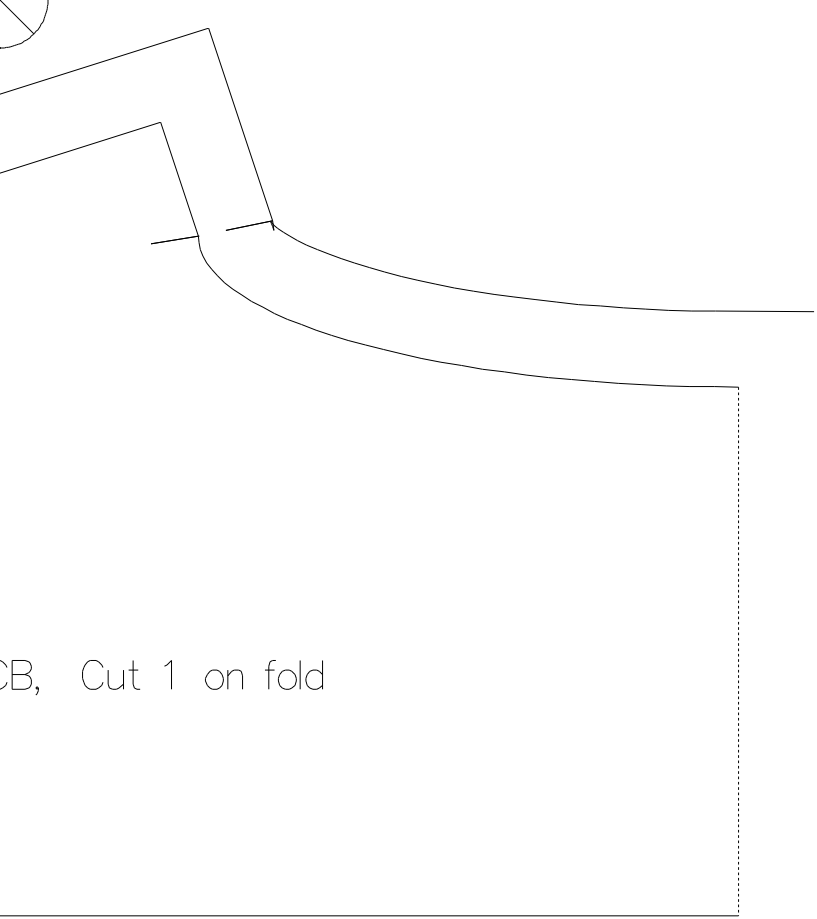
NONAME
Row 2 of 4
column 2 of 7



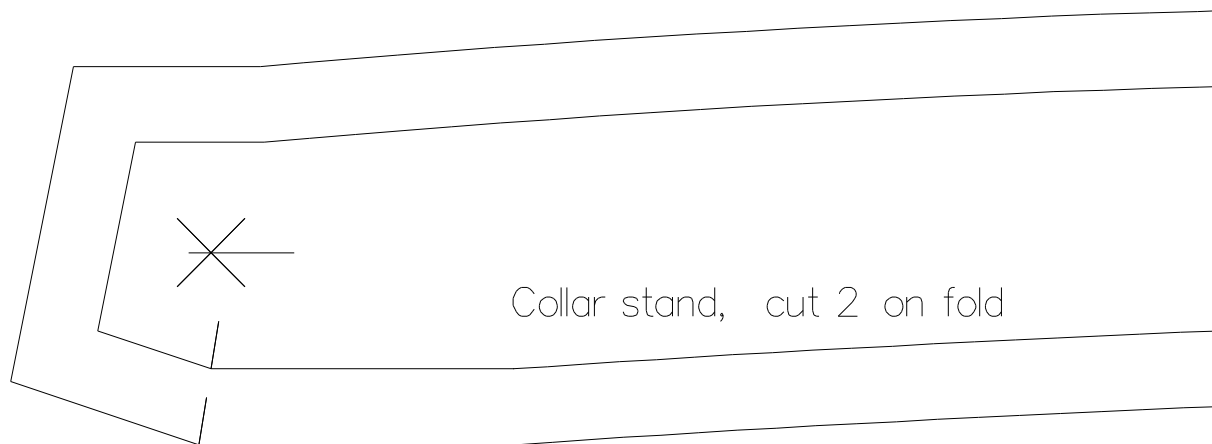
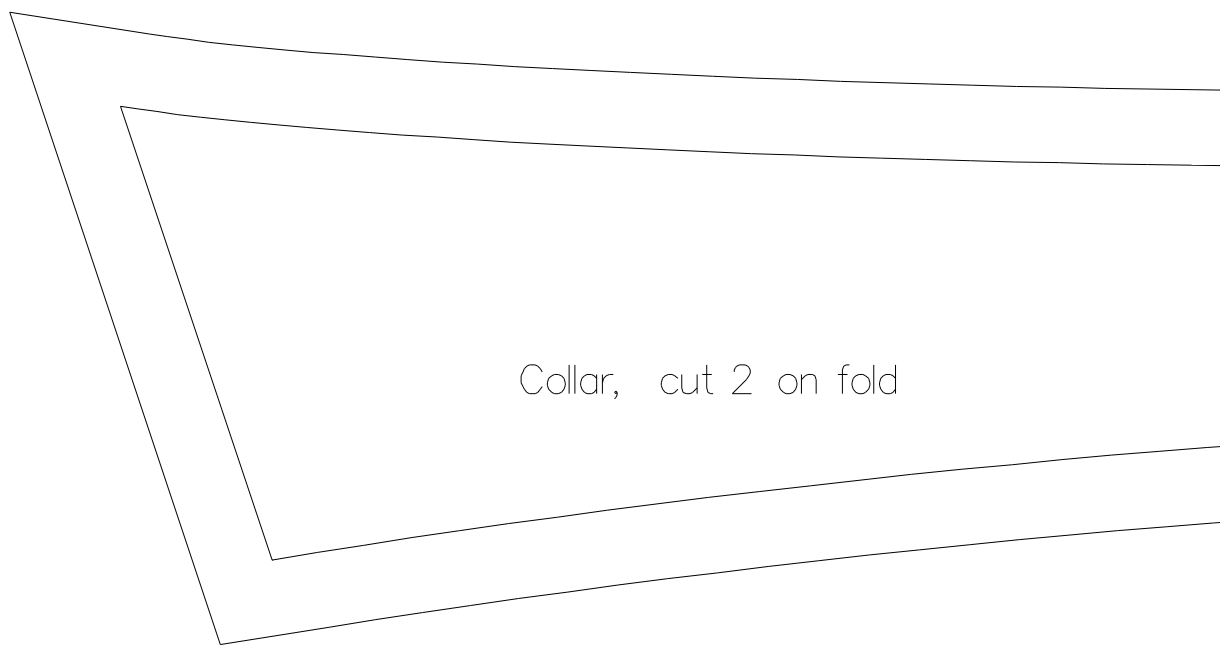
Back Yoke, C

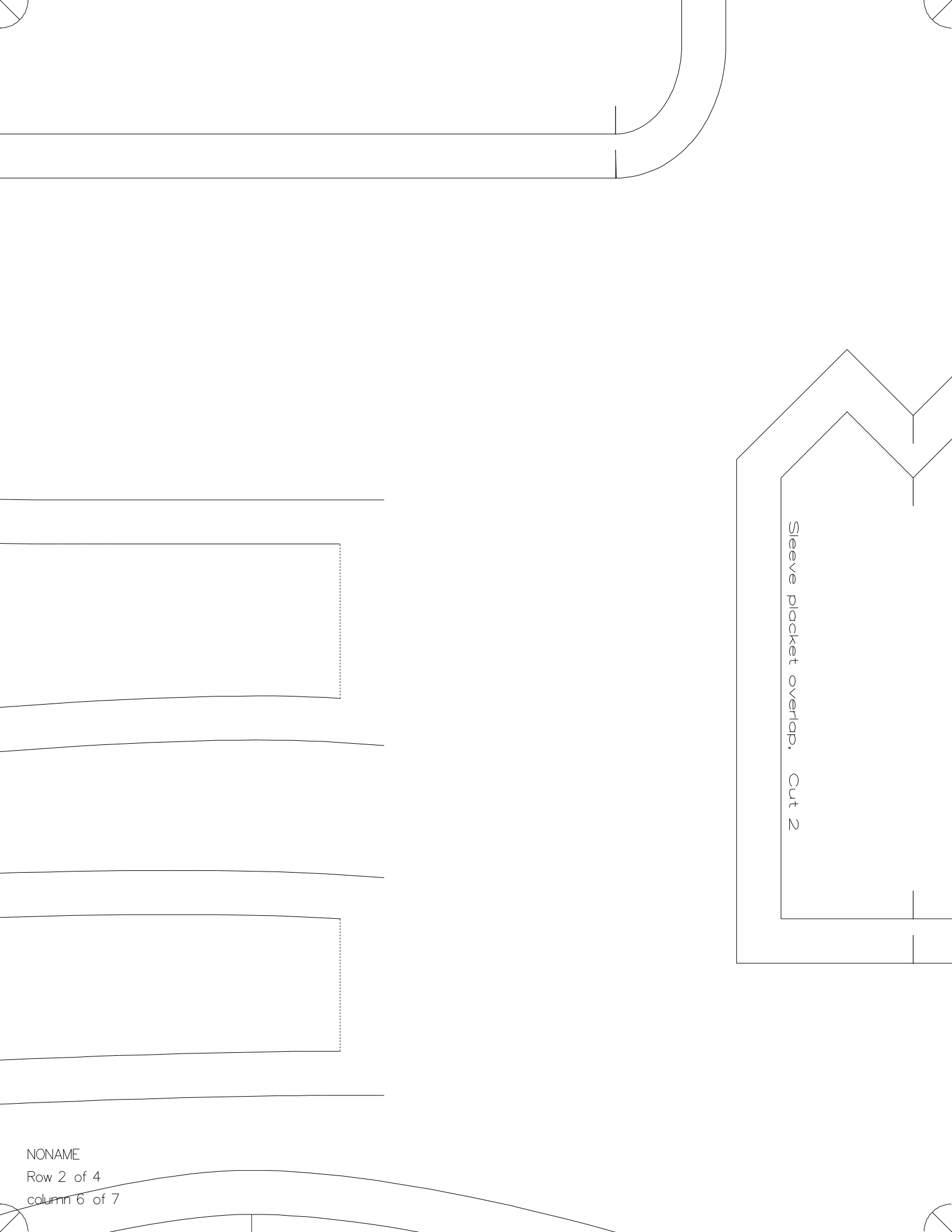


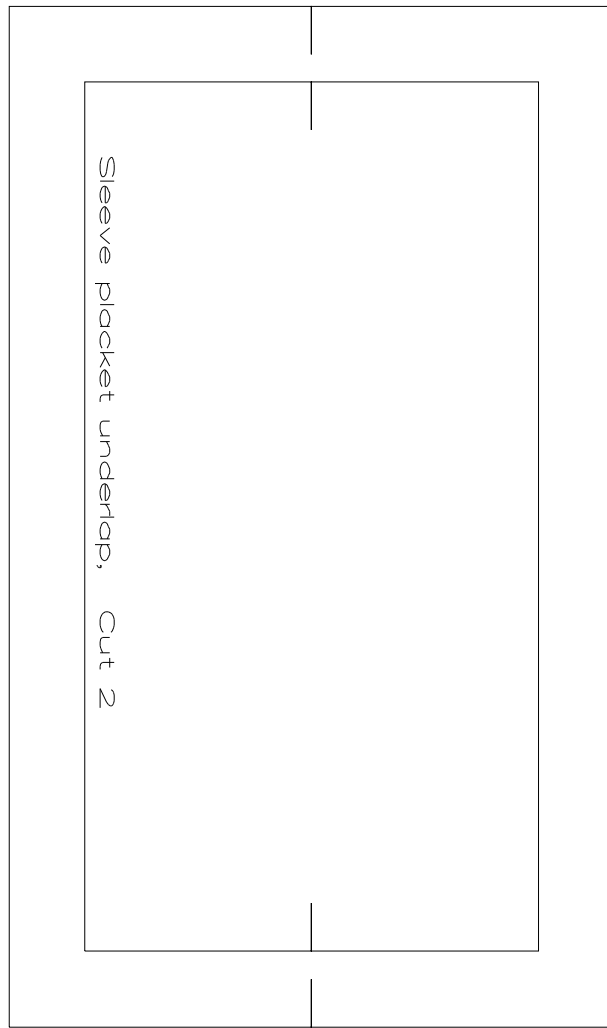
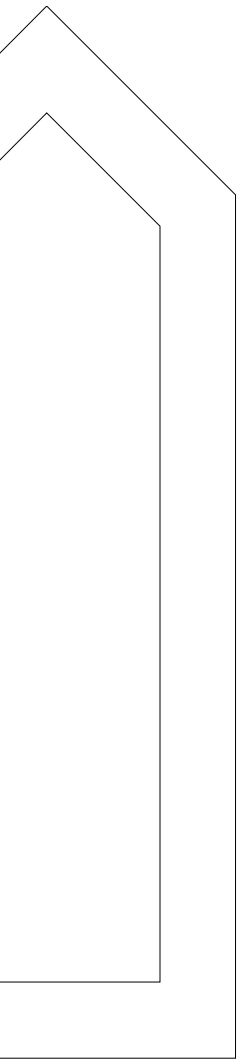
Fold



CB, Cut 1 on fold



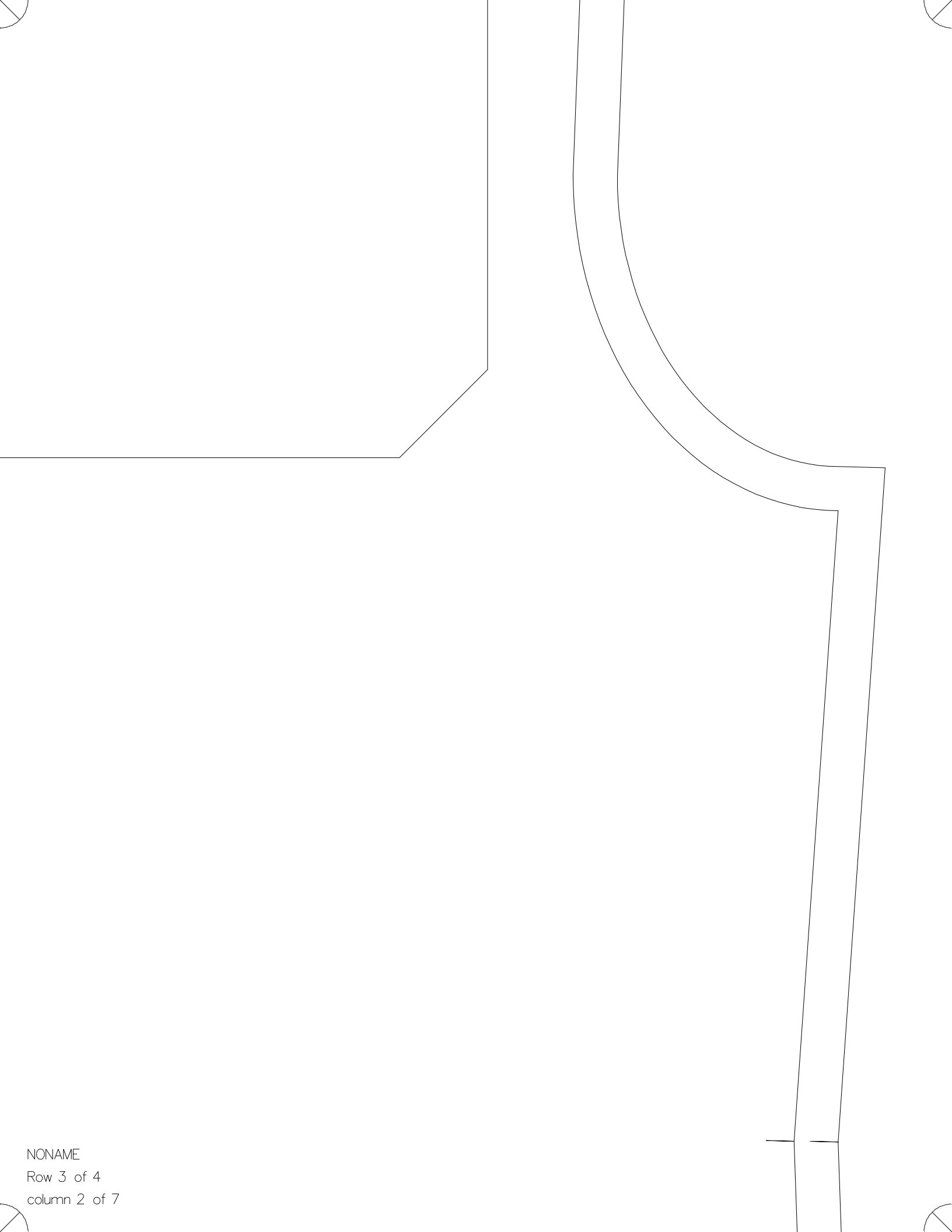


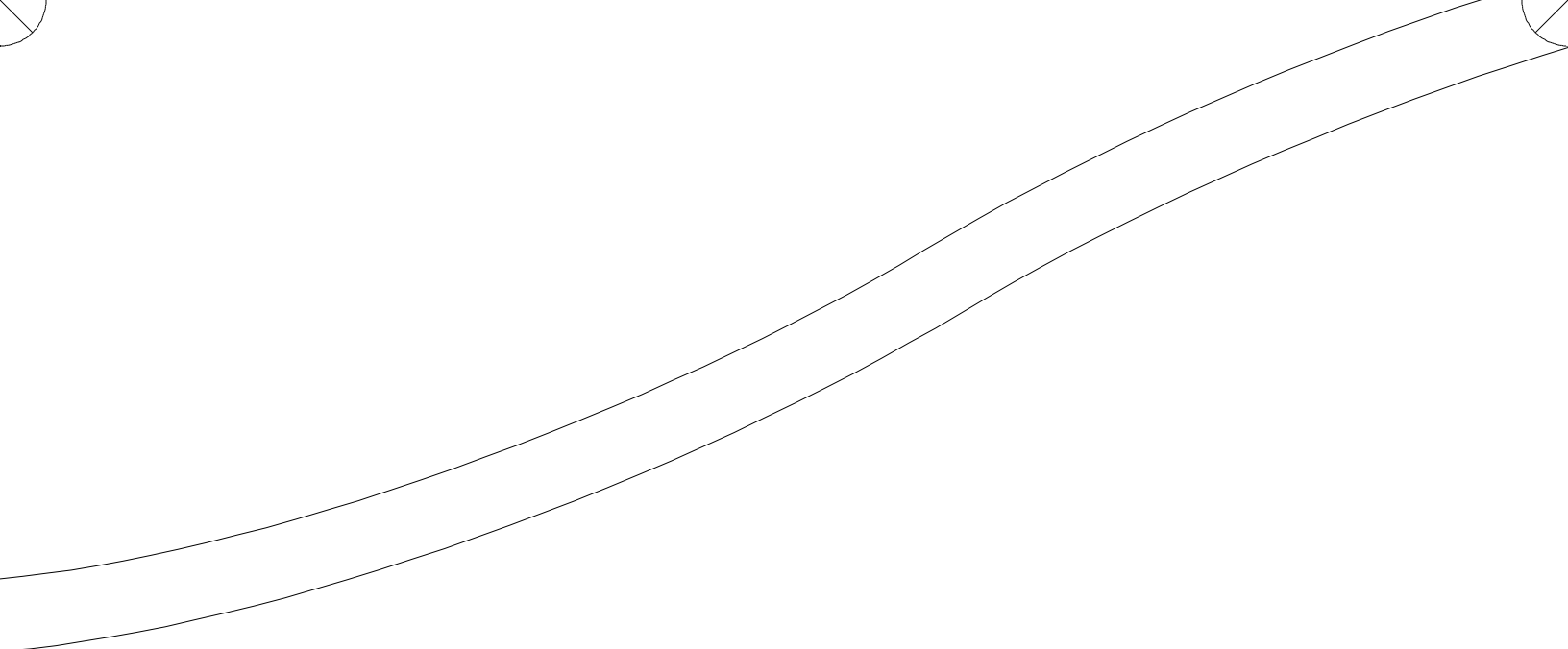


cut 2

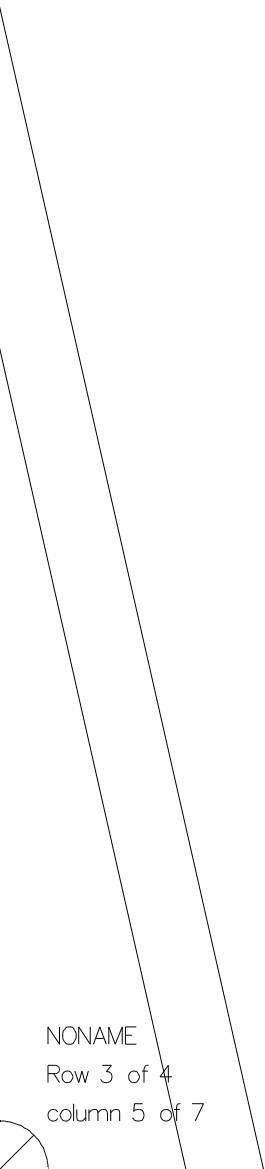
cut 2







Front



Sleeve grainline, shoulder, cut 2

Back

[illegible]

